

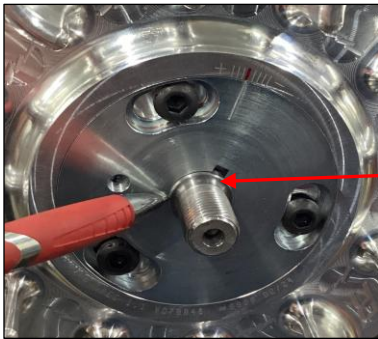


200 ADJUSTABLE ALUMINUM FLYWHEEL
PART # AFLY 200
(REVISED 2/29/24)

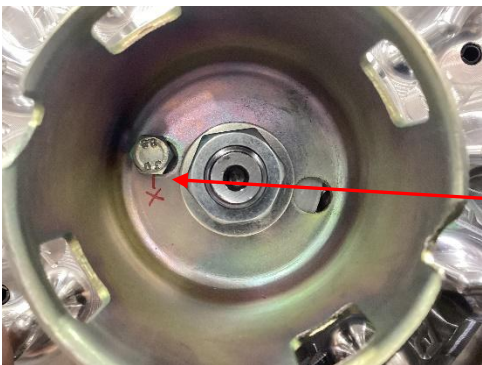
NOTE: Flywheel timing set for peak performance and will not need any additional adjustment.

NOTE: Engine Rev-limiter will no longer function allowing higher engine RPMs. Use Billet Connecting Rod (**NLRB3200**) to prevent engine damage.

IMPORTANT: Set coil to magnet air gap to .045 using less clearance can cause coil damage.



You will need to drill center hole of recoil cup to 18mm or 23/32 to fit over crankshaft shoulder.
NOTE: Make sure cup fits tight against flywheel.



Clean crankshaft and flywheel tapers install flywheel and recoil cup and small bolt using **BLUE** Loctite marked with **X** in picture. Torque flywheel nut to **45ft lbs.** loosen nut and re-torque to 45 ft lbs. again to seat flywheel.

*****PLEASE NOTE*****

Manufacturer and distributor specifically disclaim all responsibility for consequential and incidental damages or any other losses arising from the use of this product. Any dispute arising out of the use of this product must be settled in Linn County, Iowa under Iowa law.

QUESTIONS TO TECH HELP CONTACT RECREATIONAL MOTORSPORTS AT 319-462-6932
M-F 8:30AM TO 5PM