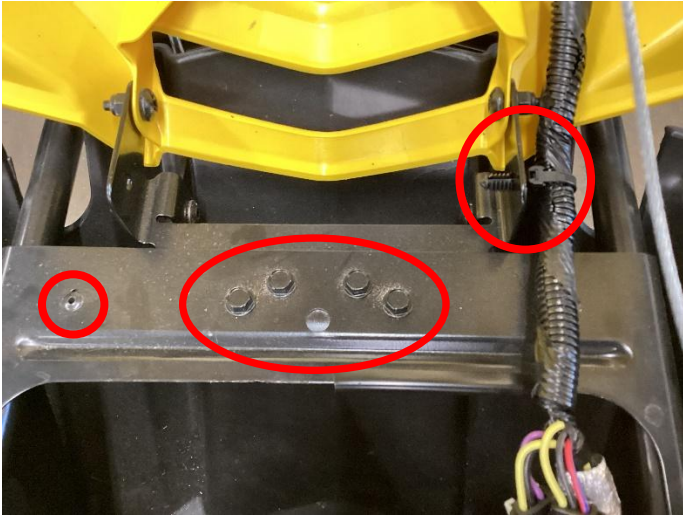




HEAVY DUTY HOOD HINGE  
PART # 200 HINGE  
(REVISED 10/24/2023)



Remove two bolts that hold hood to hinge. Note: Hood tabs are very fragile use two people to remove hood.  
Tip: You can leave the wires and hood cable hooked up and carefully lay hood to the side. Remove all items circled in RED they will not be reused.  
Note: There is a rivet under the wire loom not shown in the picture that will also need drilled out.

Mount new hinge using 2 supplied bolts as shown, align hinge and tighten bolts and install hood to hinge.  
(IMPORTANT) Make sure to test fit hood before drilling rivet holes.  
Using a 3/16 drill bit drill 4 holes thru bulkhead into bumper and pop rivet hinge to sled.



TECH LINE IS AVAILABLE AT (319) 462-6932 MONDAY TO FRIDAY 9 AM TO 5 PM CENTRAL STANDARD TIME. OR VISIT US AT [www.recmotor.com](http://www.recmotor.com). THANK YOU.

\*\*\*\*\*PLEASE NOTE\*\*\*\*\*

**Manufacturer and distributor specifically disclaim all responsibility for consequential and incidental damages or any other losses arising from the use of this product. Any dispute arising out of the use of this product must be settled in Linn County, Iowa under Iowa law.**

\*\*\*\*\*