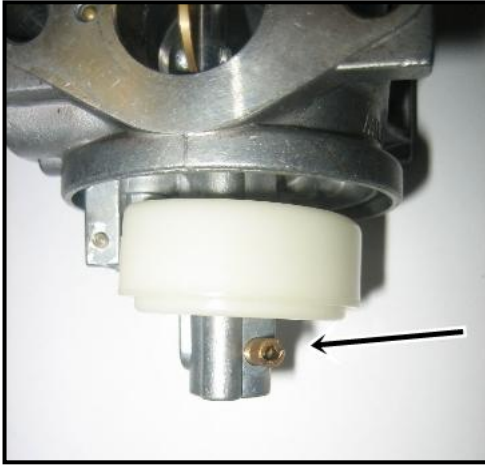


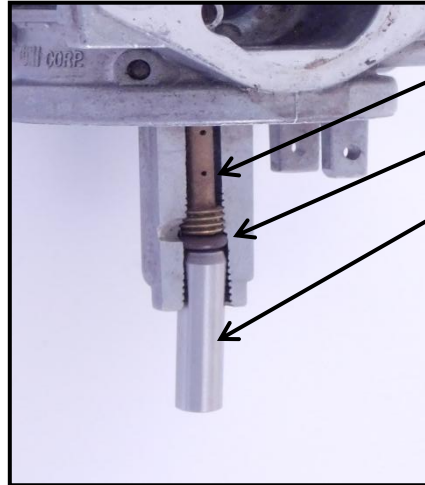
YAMAHA SRX 120 & ARCTIC CAT 120 (2010 TO CURRENT) ADJUSTABLE MAIN JET INSTRUCTIONS

REVISED 3/13/2019

(CARBURETOR WILL HAVE TO BE REMOVED FROM ENGINE TO INSTALL ADJUSTABLE MAIN JET)

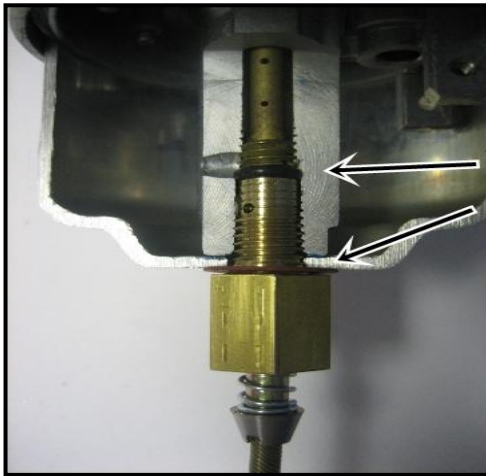


REMOVE STOCK MAIN JET, IT
WILL NOT BE USED



NOZZLE
SUPPLIED O-RING
SUPPLIED O-RING
INSTALLATION TOOL

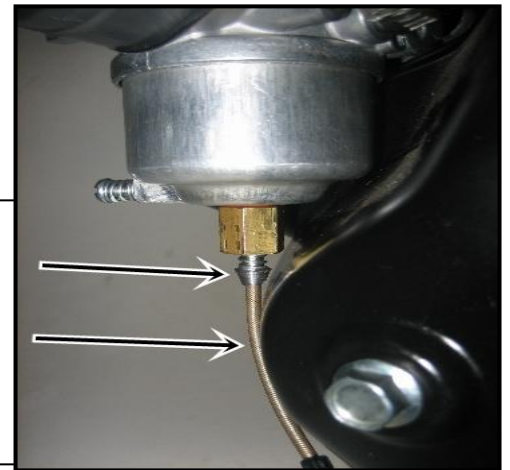
(MAKE SURE O-RING IS FULLY
SEATED AGAINST NOZZLE WHEN
PUSHING INTO CARBURETOR)



SUPPLIED O-RING SIZE .006
STOCK FLOAT BOWL
GASKET OFF OF ORIGINAL
FLOAT BOWL NUT

MAKE SURE NEEDLE HAS
CLEARANCE HERE

YOU WILL NEED TO MAKE A DENT
IN THE RECOIL SHROUD SO CABLE
WILL NOT RUB DIRECTLY ON
SHROUD

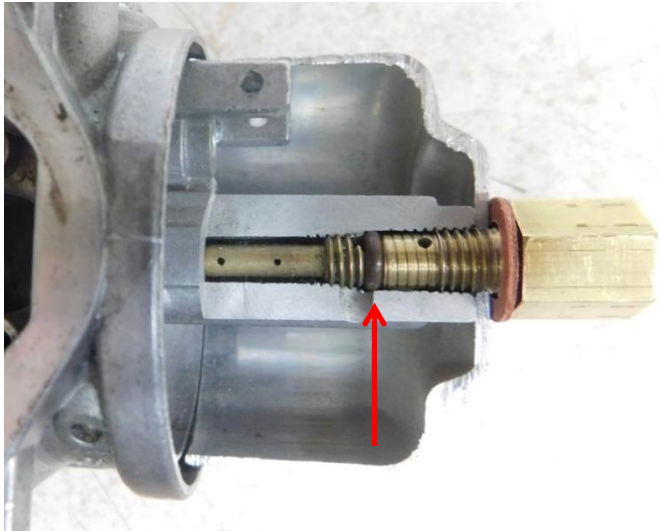


***TIP JET NEEDLE STARTING ADJUSTMENT 1 ½ TURNS OUT FROM SEAT**

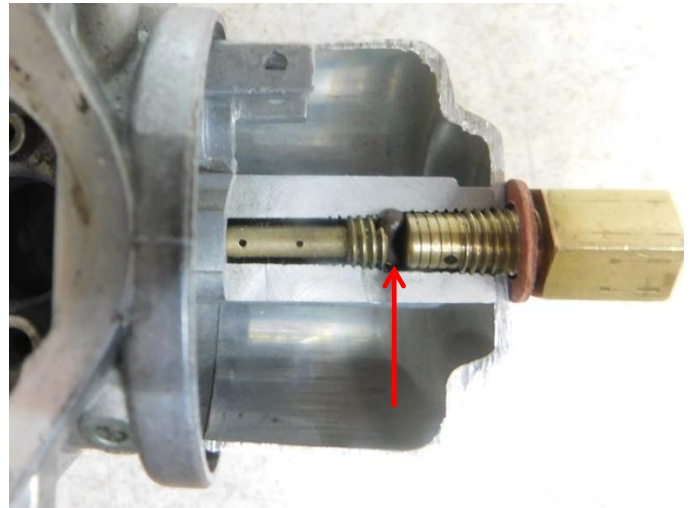
*****PLEASE NOTE*****

Manufacturer and distributor specifically disclaim all responsibility for consequential and incidental damages or any other losses arising from the use of this product. Any dispute arising out of the use of this product must be settled in Linn County, Iowa under Iowa law.

YAMAHA ADJUSTABLE MAIN JET SERVICE BULLETIN



GOOD O-RING



DAMAGED O-RING

Problem: Installed new Adjustable Main Jet #AMJCATYA and engine will idle but not rev up.

Cause: O-ring is not installed correctly in nozzle area (see picture), which will block off fuel to the main jet.

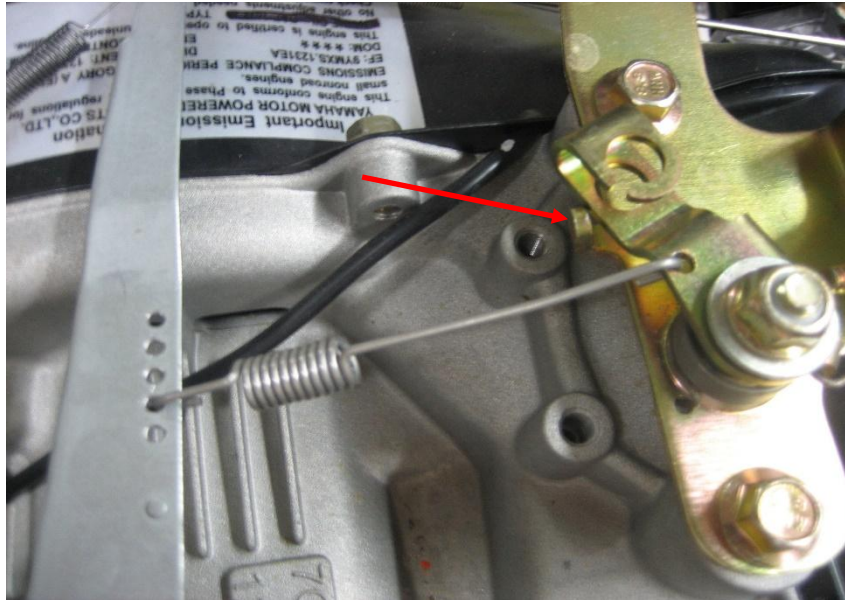
Repair: Using push pin tool supplied in the kit, install the extra O-ring that was supplied in the kit correctly. Lubing the O-ring will allow it to slip when tightening the AMJ nut.



YAMAHA SRX 120 & ARCTIC CAT 120 (2010 TO CURRENT) HIGH RPM GOVERNOR SPRING INSTRUCTIONS

REVISED 7/6/14

1. WITH ENGINE SHUT OFF REMOVE STOCK GOVERNOR SPRING. (**USING A NEEDLE NOSE PLIERS WILL MAKE SPRING REMOVAL EASIER**)
2. INSTALL NEW SPRING IN THE STOCK HOLE LOCATION AS SHOWN IN PICTURE.
3. **VERY IMPORTANT:** WHEN STARTING ENGINE AFTER INSTALLING THE NEW GOVERNOR SPRING, MAKE SURE TO SAFELY RAISE AND SUPPORT BACK OF SLED. START THE SLED TO MAKE SURE GOVERNOR SPRING IS NOT ALLOWING ENGINE TO RUN ABOVE NORMAL IDLE. IF ENGINE IS NOT GOING BACK TO IDLE BEND THE SMALL TAB MARKED WITH THE **RED** ARROW ON PICTURE WITH SMALL PLIERS AWAY FROM THE THROTTLE ARM.
4. THIS SPRING IN THE STOCK LOCATION WILL INCREASE TOP RPMs TO AROUND 6000 + RPMs.

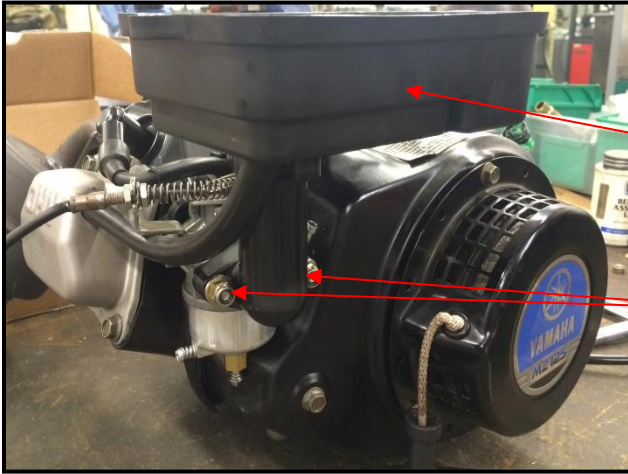


*****PLEASE NOTE*****

This product is intended for closed-course racing only and is sold “as-is” without warranty. Manufacturer and distributor specifically disclaim all responsibility for consequential and incidental damages or any other losses arising from the use of this product. Any dispute arising out of the use of this product must be settled in Linn County, Iowa under Iowa law.

YAMAHA SRX 120 & ARCTIC CAT 120 (2010 TO CURRENT) VELOCITY STACK INSTRUCTIONS

REVISED 8/6/14

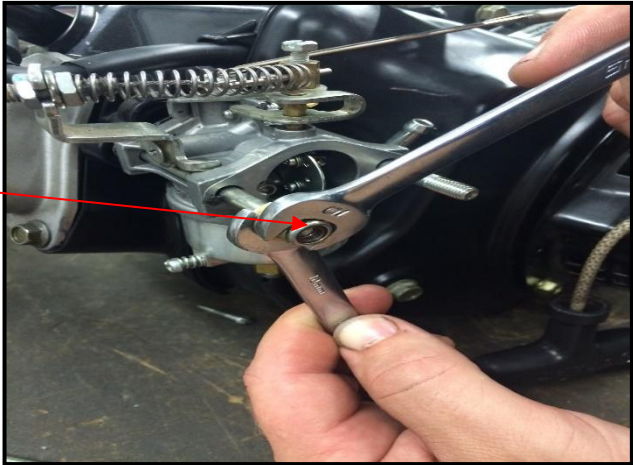


REMOVE STOCK AIR BOX.

1 BOLT INSIDE

2 NUTS

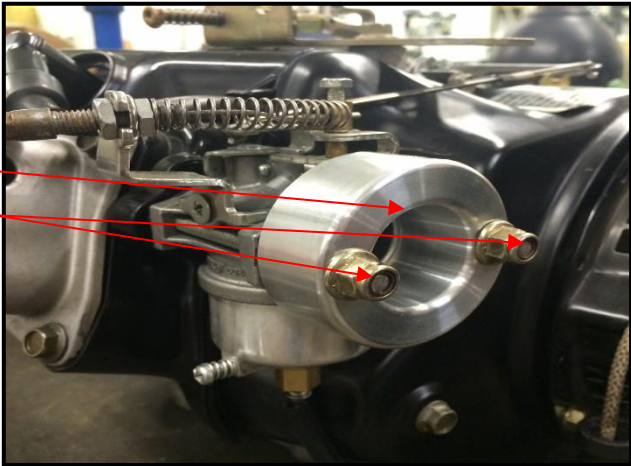
DOUBLE NUT OEM STUDS USING THE NUTS OFF AIR BOX. REMOVE OEM STUDS.



INSTALL SUPPLIED STUDS FINGER TIGHT; MAKE SURE ALL GASKETS ARE IN PLACE.



INSTALL VELOCITY STACK WITH TAPER FACING OUTWARD, USE OLD AIR BOX NUTS.
(IF INSTALLING ADJUSTABLE MAIN JET, INSTALL JET BEFORE PUTTING ON VELOCITY STACK)



*****PLEASE NOTE*****

This product is intended for closed-course racing only and is sold "as-is" without warranty. Manufacturer and distributor specifically disclaim all responsibility for consequential and incidental damages or any other losses arising from the use of this product. Any dispute arising out of the use of this product must be settled in Linn County, Iowa under Iowa law.
